

# SPACES THAT HEAL

DESIGN FOR SOCIAL REGENERATION

Imogen Coote | 616596

Systems Design | KDA 309

Design Project | AT2



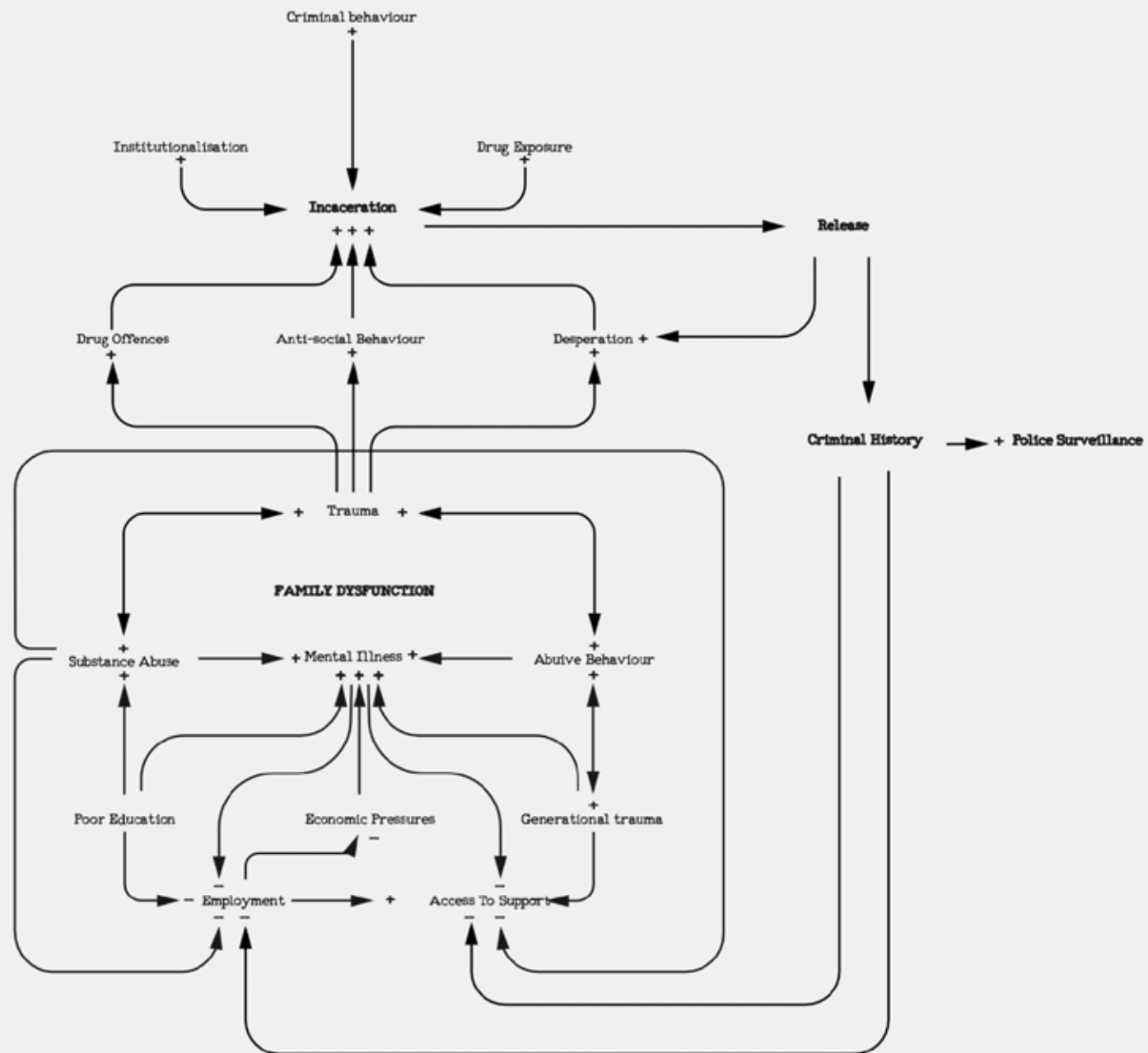
ALDERMASTON DEMONSTRATIONS | DON MCCULLIN

# THE PROBLEM

**In 2024, 60% of prisoners were re-incarcerated, exposing critical flaws in Australia's corrective system.**

Research shows that family dysfunction plays a major role in the development of antisocial behavior, leaving individuals to struggle socially—whether in school, their careers, or with the law.

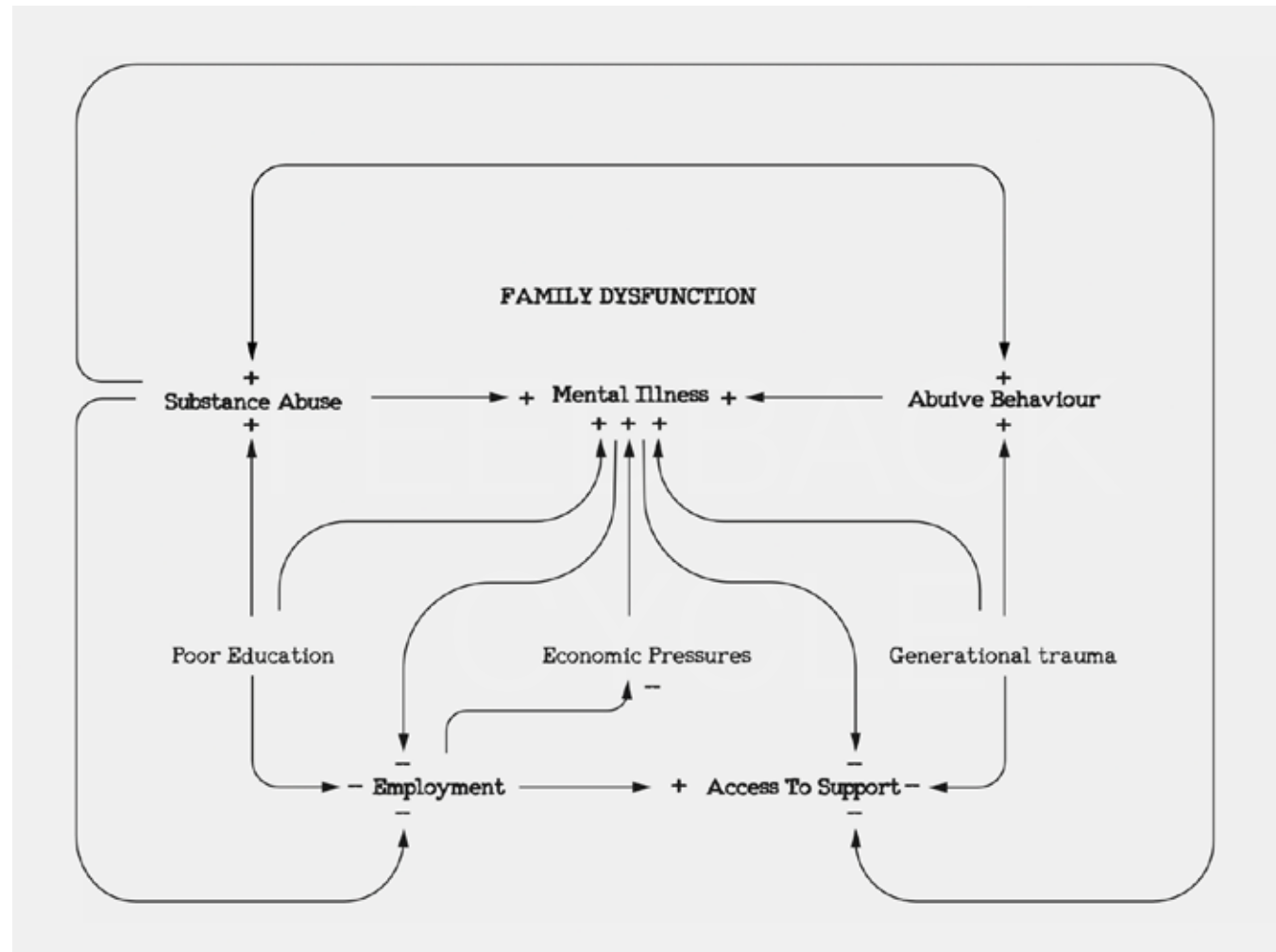
When a person's home life is unstable, rehabilitation often fails, trapping them in cycles of dysfunction instead of breaking it.



# SOLUTION

Fixing the roof won't help when the walls are crumbling.

Ensuring strong support within the family home will shape future generations into resilient, educated, empowered, and connected individuals, strengthening Australia's social foundation.



# SOCIAL REGENERATION

Social regeneration revitalizes communities by strengthening connections, fostering resilience, and empowering individuals to thrive collectively.

## FOR THE INDIVIDUAL

An empowered individual gains ownership, identity, autonomy, and security, fostering self-esteem, belonging, and meaningful

## FOR THE FAMILY

Strengthening family relationships fosters stability, support, and shared identity, promoting prosocial behavior, communication, and growth while breaking dysfunctional cycles.

## FOR THE COMMUNITY

Social regeneration empowers individuals to engage with optimism, driving collective action, local initiatives, and shared spaces that strengthen connections and curb antisocial behavior.

Unity, trust, belonging, identity, connection, ownership, autonomy, safety, wellbeing, prosocial behaviour





# BRIEF

**SPACES THAT HEAL |**  
DESIGNING FOR SOCIAL  
REGENERATION

This project Explores how domestic spaces can drive social regeneration within families. Disrupting cycles of dysfunction through intentional design. The project highlights key design elements in personal and communal environments, creating a scalable framework for future housing—enhancing social well-being, efficiency, and sustainability.

**TARGET AUDIENCE:**  
Future Australian single parent  
households.

# DOMESTIC ENVIRONMENT

## COMMUNAL SPACE

Areas intentionally designed to foster connection and shared experiences within the household. Kitchens, dining rooms, and living spaces serve as the heart of the home, where family members gather, interact, and engage in daily life together.

## PERSONAL SPACE

Spaces dedicated to an individual within the household, offering privacy, comfort, and self-expression. Bedrooms, for example, serve as personal retreats where occupants can relax, recharge, and maintain their own sense of identity.

## PHYSICAL LIMITATION

The design solutions will be confined to a 16m<sup>2</sup> floor plan to encourage greater spatial efficiency. This approach prioritizes strategic space utilization, requiring the integration of multi-functional elements, vertical storage, and adaptable layouts to maximize usability within a compact footprint.



# PRINCIPLES



THE STEEL TOWN | CONSETT | 1974 DON MCCULLIN

## SYSTEMS DESIGN

Whole Systems Thinking:  
Considering how the design exists within the greater ecological, social and economic environment to ensure long-term resilience.

## REGENERATIVE DESIGN

A Positive Impact Beyond Neutrality:  
Instead of reducing harm, the design should seek to restore ecosystems, improve biodiversity, and strengthen communities.

## TRAUMA INFORMED DESIGN

Trauma-informed design creates spaces that promote safety, empowerment, and emotional healing by considering the impact of trauma.

## COLLABORATIVE DESIGN

Ensuring key stakeholders have an involvement within the design process to ensure their needs are met



# DESIGN OPPORTUNITIES



## NATURAL SURVEILLANCE

Integrating visibility into design to enhance safety, passive security, and community oversight.

## COLLABORATIVE APPROACH

Designing through shared input, fostering teamwork, co-creation, and diverse perspectives.

## UNRESTRICTED MOVEMENT

Removing barriers to ensure seamless navigation, freedom of access, and dynamic spatial flow.

## ELIMINATION OF HIERARCHY

Flattening power structures to encourage equal participation, accessibility, and open dialogue

## INCLUSIVE DESIGN

Creating spaces that accommodate all users, prioritizing accessibility, diversity, and equitable experiences.

## TERRITORIAL REINFORCEMENT

Establishes ownership through design, fostering safety and community pride.

# INFLUENCES

## PRIMARY INFLUENCES:

**BOOK** | DESIGNING OUT CRIME: CRIME PREVENTION THROUGH ENVIRONMENTAL DESIGN | SUZANNE GEASON & PAUL R WILSON

This project examines how principles from Designing Out Crime can be applied to foster social regeneration in domestic spaces. Key principles include Natural Surveillance and Territorial Reinforcement, which promote safety, trust, and positive social behavior.

**HISTORICAL** | MUSEUM OF LIVING COMMUNISM | BUCHAREST

The Museum of Living Communism has sparked deeper exploration into how housing can reflect societal beliefs. This reference has influenced my design philosophy and guided my approach to the project.

## SECONDARY INFLUENCES:

**ARTIFACT** | THE LAZY SUZANNE

**BOOK** | SENSE-HACKING | CHARLES SPENCE

**LECTURE** | THE ART OF JAPANESE GARDENS | KATHLEEN OLIVE



MUSEUM OF LIVING COMMUNISM | BUCHAREST





# CODESIGN

## AN ONGOING CONVERSATION

Psychological Safety  
Physical Safety  
Accessibility

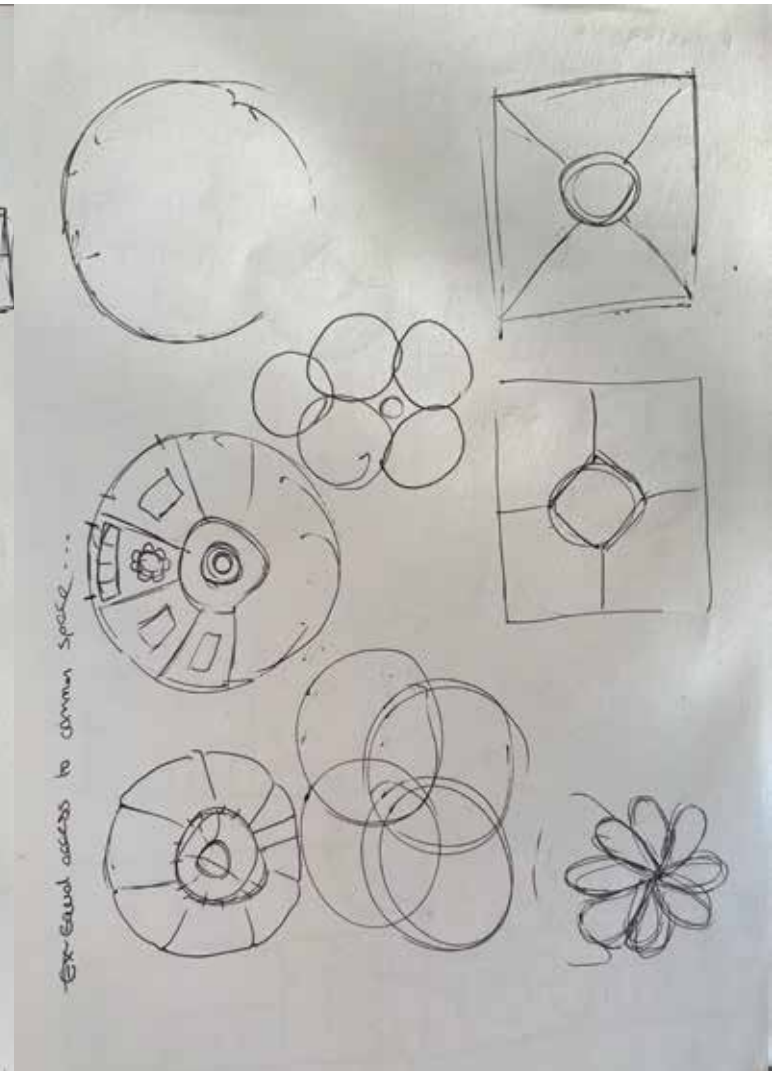
## ANONYMOUS CONTRIBUTOR

Domestic Violence Survivor,

## JULIE DOMBROWSKI

Forensic Psychologist,

Hand-drawn floor plan of a 2-bedroom apartment. The layout includes a Living Room, Kitchen, Dining area, two Bedrooms, two Bathrooms, and a Balcony. The plan is oriented with the entrance at the top. The Living Room is on the left, the Kitchen is on the right, and the Dining area is in the center. The two Bedrooms are at the bottom, and the two Bathrooms are on the right side. The Balcony is located outside the Dining area.





# COMMUNAL

KITCHEN/DINING

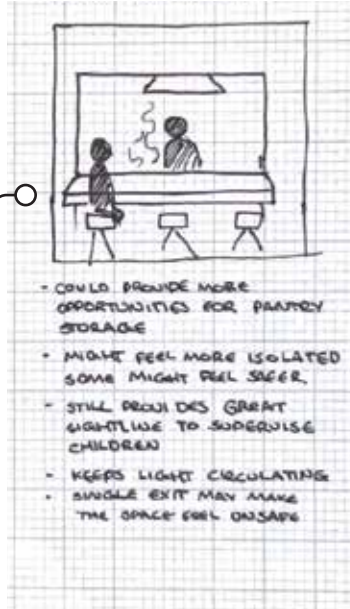
## COMMUNAL SPACE

Areas intentionally designed to foster connection and shared experiences within the household. Kitchens, dining rooms, and living spaces serve as the heart of the home, where family members gather, interact, and engage in daily life together.

# SPACE

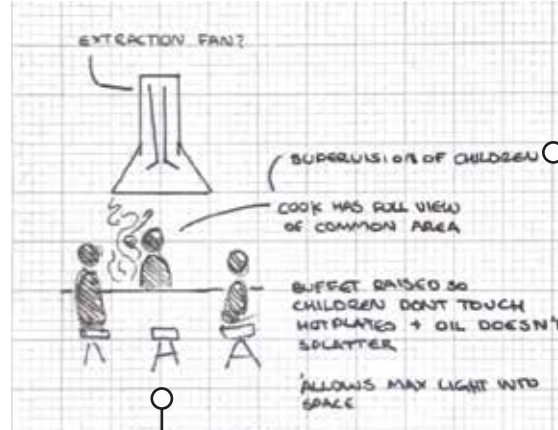
# SKETCHES

## KITCHEN



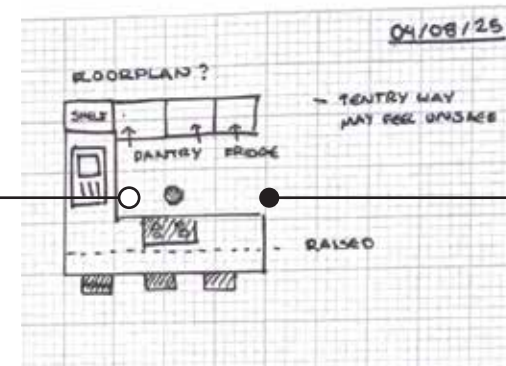
### INCLUSIVE DESIGN

Connecting the stove to the buffet invites the cook into the social space, fostering interaction and reducing feelings of isolation or inequity in household tasks.



### NATURAL SURVEILLANCE

The open layout allows the cook to oversee all activity in the common area, ensuring engagement and safety—an essential feature in a single-parent household.

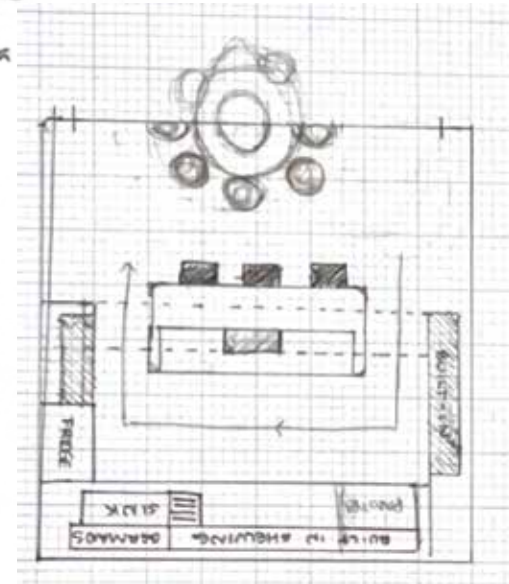
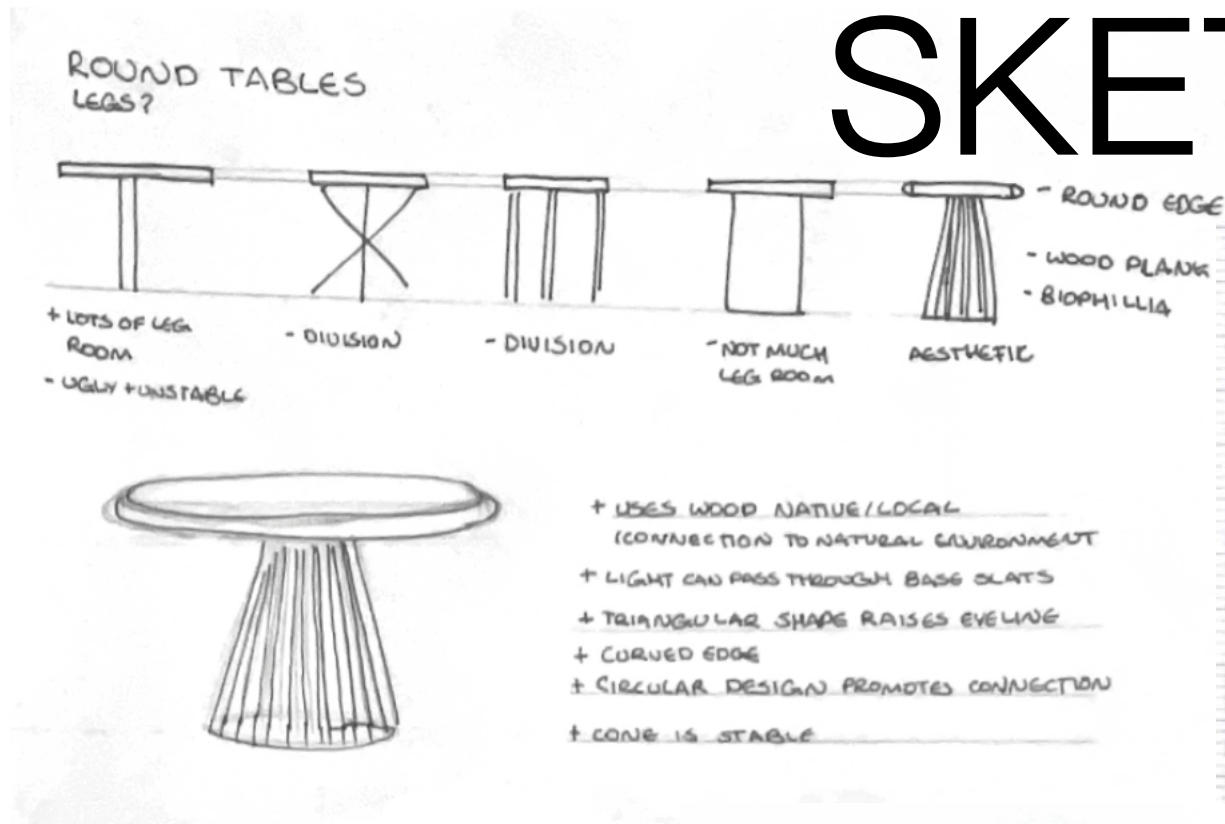


### FEEDBACK

Anonymous Contributor (Domestic Violence Survivor): Having only one entry point to the kitchen can create a sense of entrapment and insecurity.

# SKETCHES

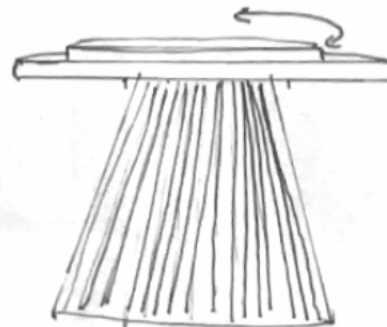
DINING



## ELIMINATION OF HIERARCHY

Eliminating hierarchical seating, round tables foster equality and open interaction, preventing power imbalances in family dynamics. Their soft, organic shape naturally creates a welcoming atmosphere, reinforcing social connection and reducing tension in shared spaces.

LAZY SUZAN



## INCLUSIVE DESIGN

A Symbol of Inclusive Design By ensuring equal access to food and shared resources, the lazy Susan fosters connection, participation, and equity, breaking down barriers in communal dining spaces.

# REVISION

## KITCHEN

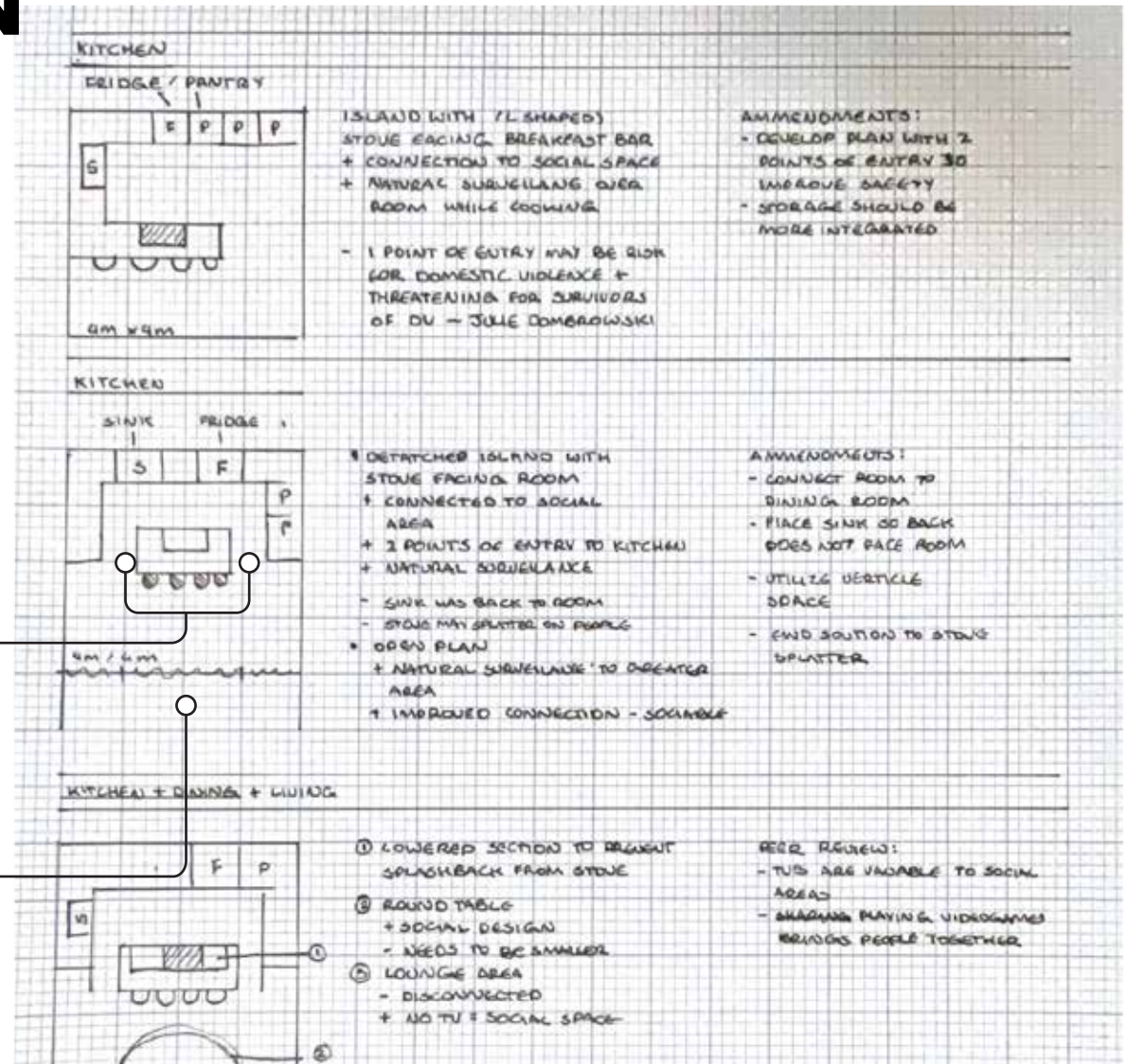
Integrating multiple points of entry has enhanced navigability and fostered a greater sense of comfort within the space. However, this approach also necessitates a more strategic use of available square footage, as additional circulation pathways require careful spatial planning. To optimize functionality without compromising accessibility, this design will explore vertical storage solutions, leveraging overhead space to improve efficiency.

## ACCESSIBILITY & UNRESTRICTED MOVEMENT

The kitchen island helps prevent entrapment, creating a more accessible and supportive space for trauma survivors.

## EXPANDING NATURAL SURVEILLANCE

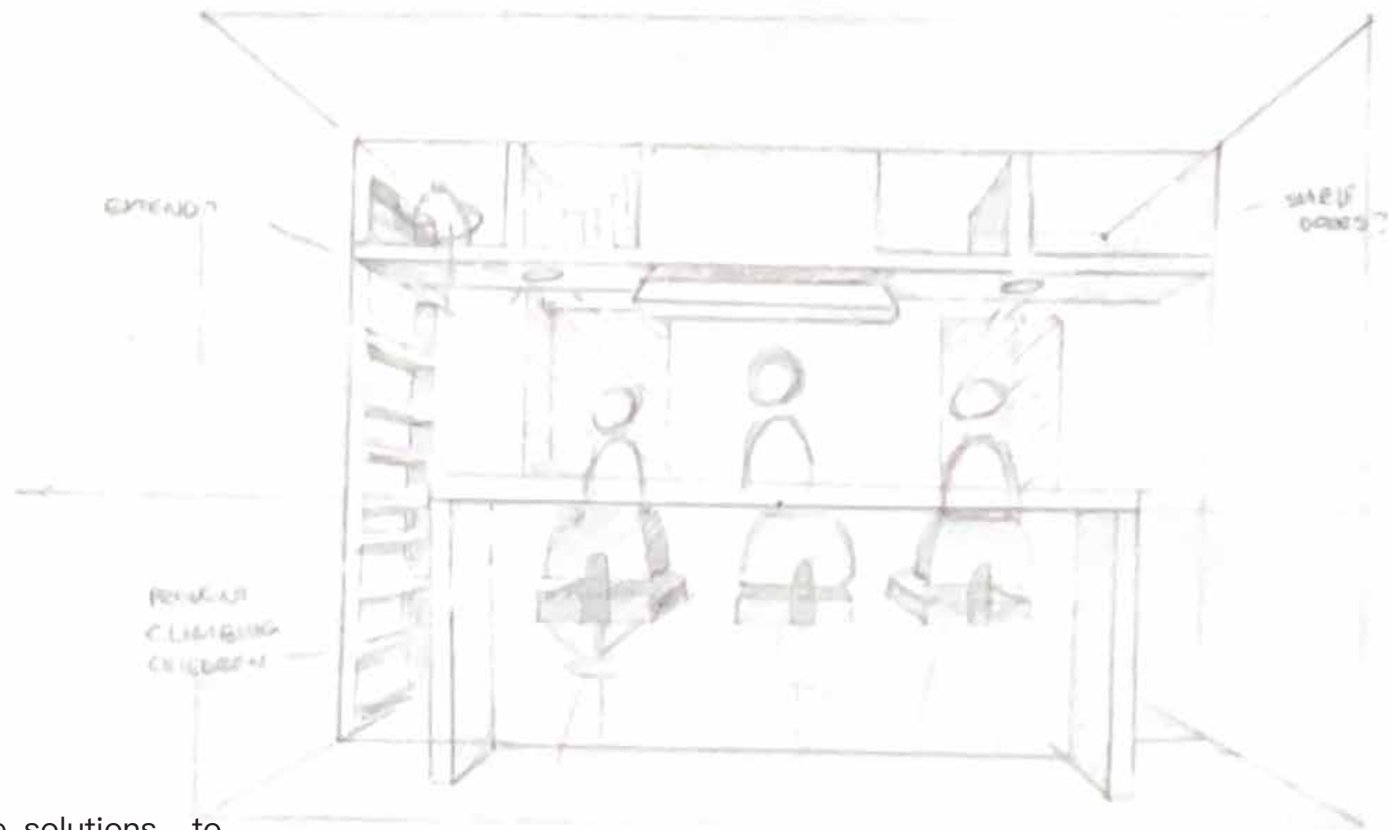
Connecting the kitchen to the dining and lounge area expands sightlines, strengthening natural surveillance and fostering a safer, more connected environment.





# REFINEMENT

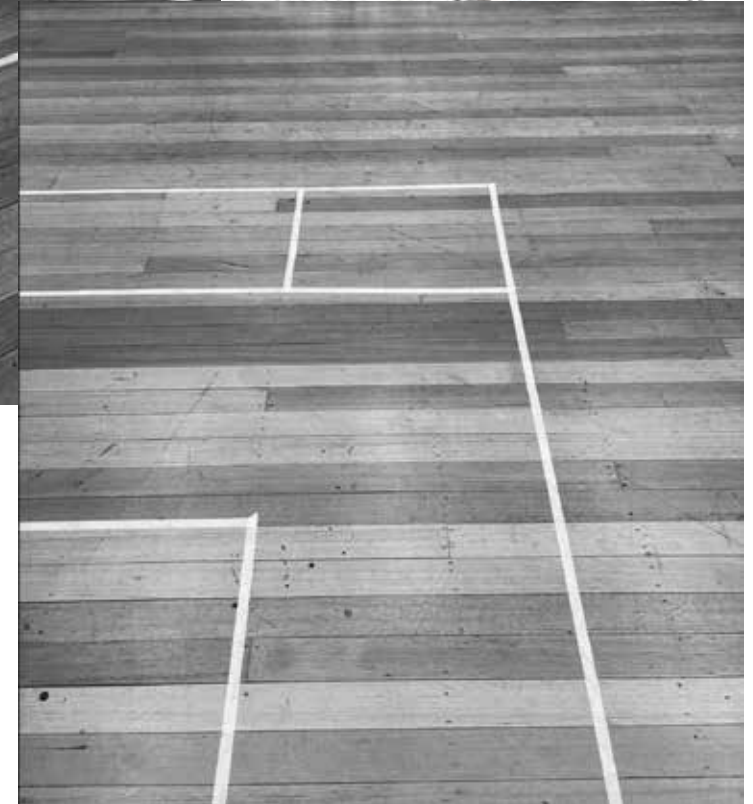
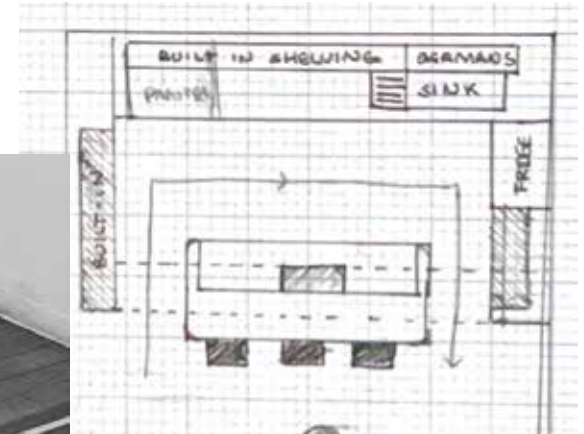
## KITCHEN



### SPACE OPTIMISATION

Utilizing vertical storage solutions to allow for passageways on both sides of the kitchen island, improving accessibility, functionality and flow.

# PROTOTYPING



## TAPE MAPPING

A tape mapping technique was used to validate the functionality of the floor plan and ensure compliance with Australian sizing standards.

Through this process, it became clear that incorporating an island bench would be challenging, as the 900mm recommended passageway clearance would significantly limit the available space for the bench.

## NOTE

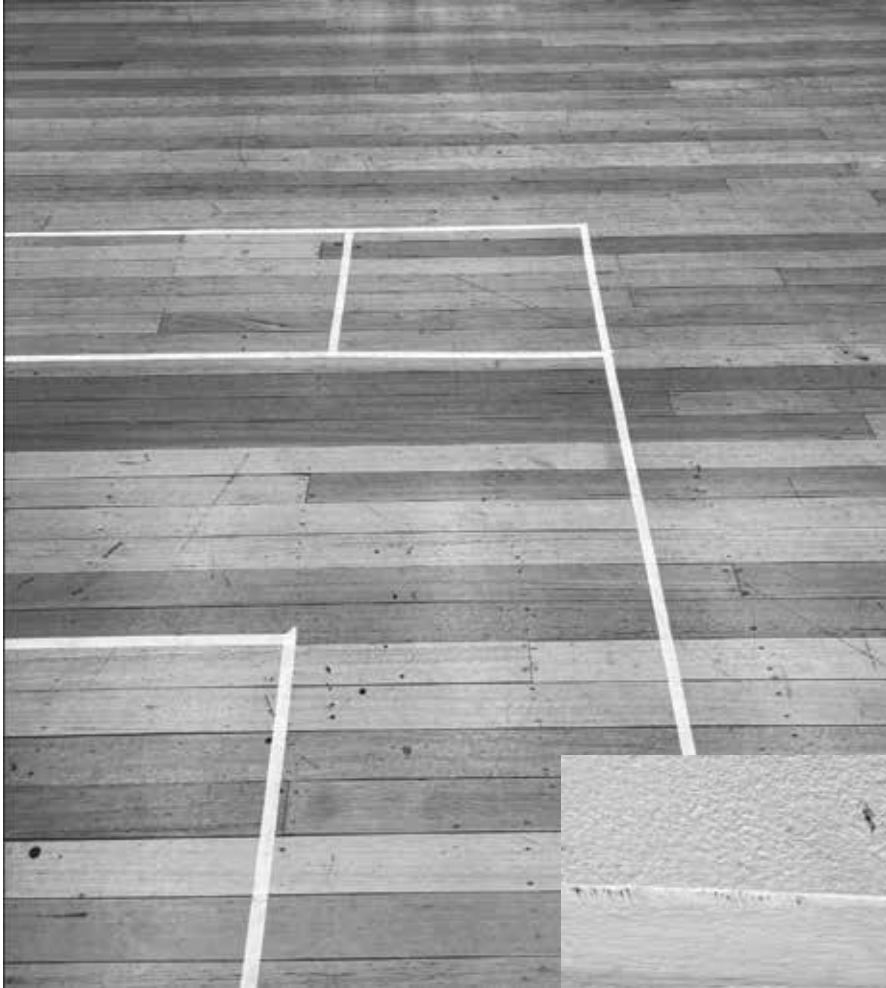
A minimal 850mm passageway clearance is recommended for wheelchair accessibility. Future design revisions aimed at improving inclusivity would need to adjust this layout to accommodate mobility needs while maintaining functionality and spatial efficiency.



## FINDINGS

A classmate assisted in testing whether the 900mm passageway clearance could be reduced. The evaluation found that a 700mm gap still allowed for comfortable movement; however, additional distance was required between the back bench and the island to maintain functionality.

# TESTING



## FINDINGS

Tape mapping was utilized to assess standard shelving depth requirements, ensuring spatial accuracy and functionality before finalizing design decisions. This approach helped visualize usability and refine storage efficiency within the available footprint.





# PROTOTYPING

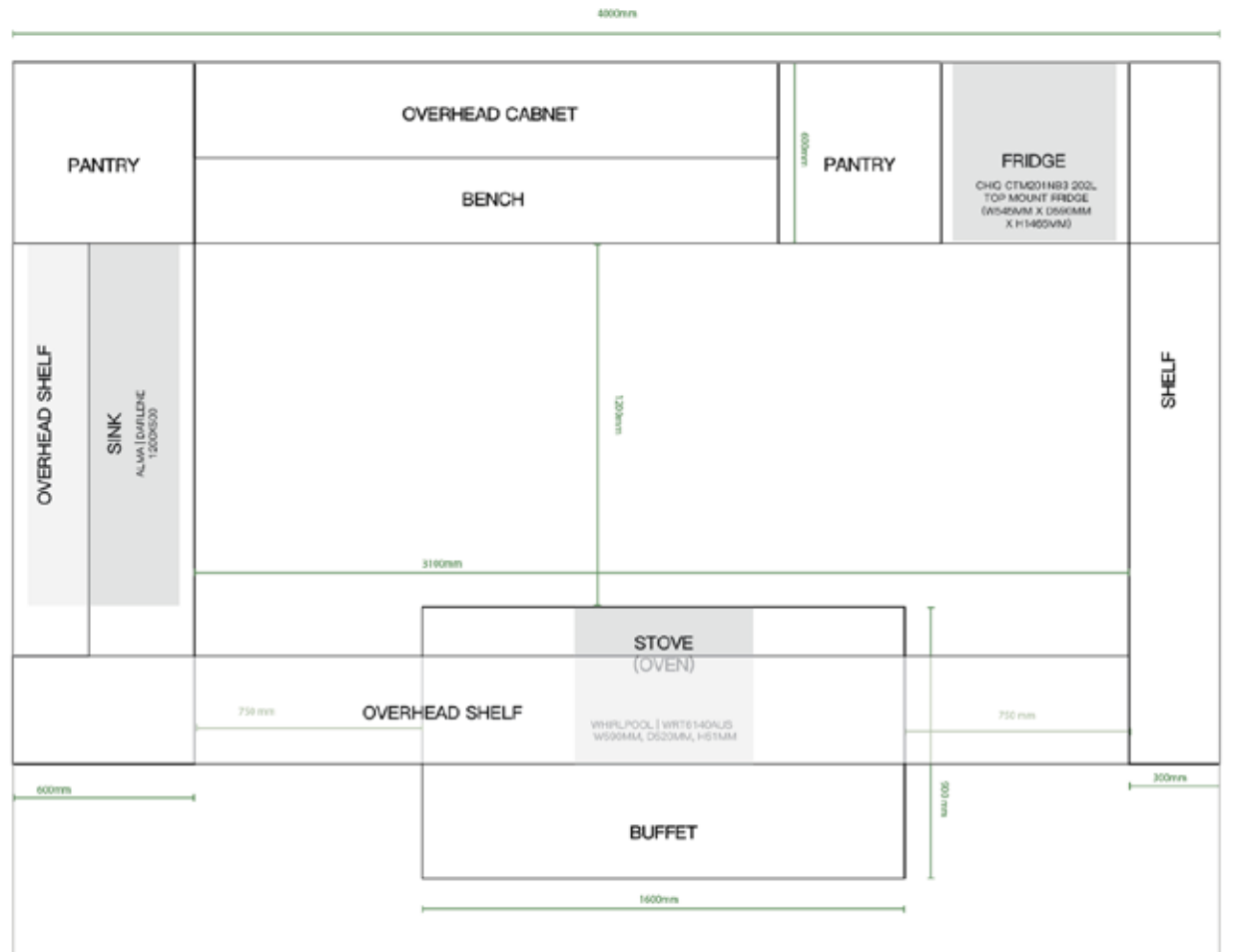


## PROTOTYPE DEVELOPMENT

Pedestals, stools, and scrap board were used to construct a prototype round table, testing dimensions to determine the optimal size for comfortably seating five individuals while maintaining accessibility and functionality. Let me know if you'd like any refinements!



# PROTOTYPING



The floor plan was meticulously laid out and refined using Illustrator to ensure precision. Cost-effective white goods were incorporated to maintain feasibility and practicality in the design.



## SKETCHUP

Visualizing the Design in SketchUp:  
The design was illustrated in SketchUp, providing a clear spatial representation and allowing for refinement of layout, proportions, and functionality within the given constraints.

# PROTOTYPE



# PERSONAL

BEDROOM

## PERSONAL SPACE

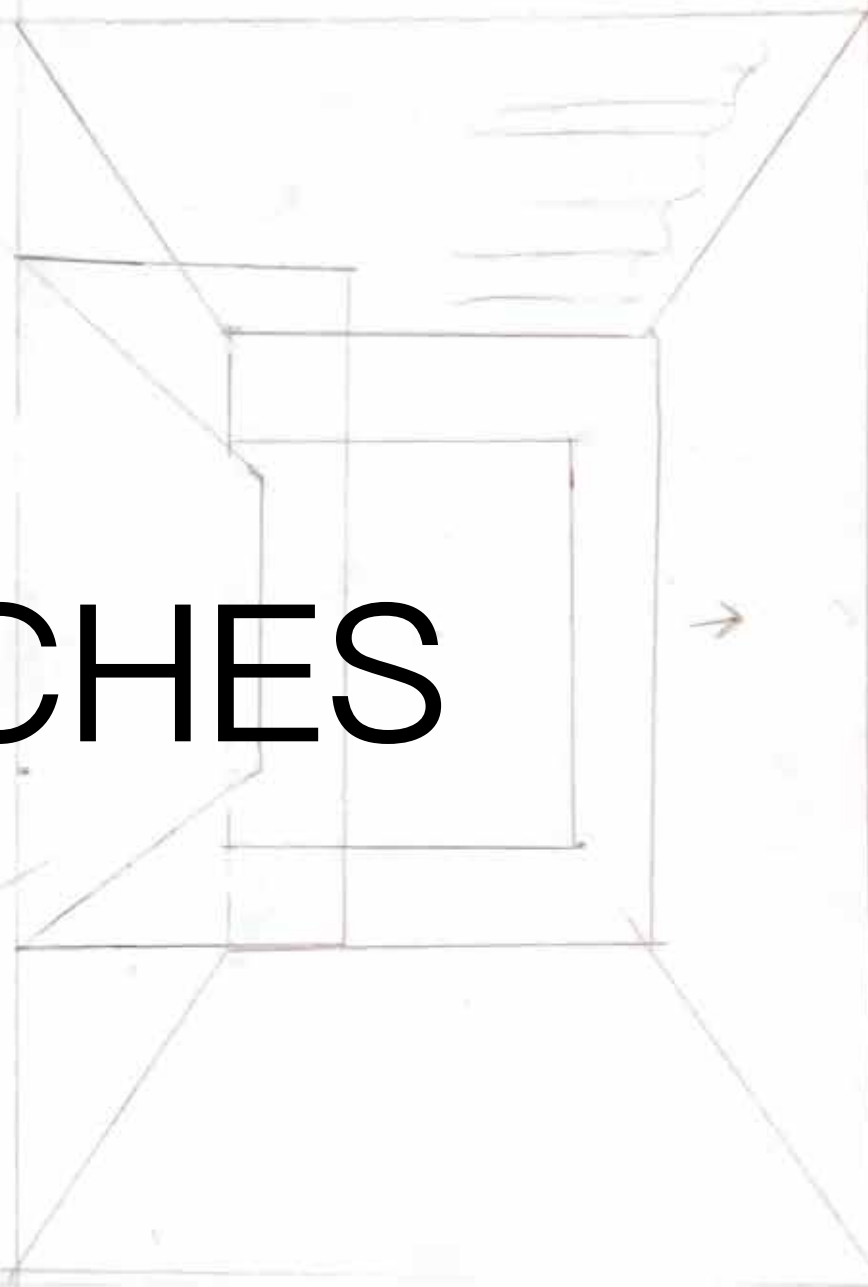
Spaces dedicated to an individual within the household, offering privacy, comfort, and self-expression. Bedrooms, for example, serve as personal retreats where occupants can relax, recharge, and maintain their own sense of identity.

# SPACE

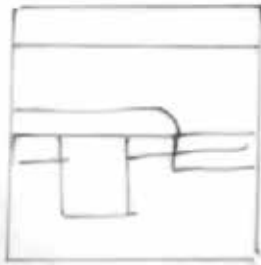
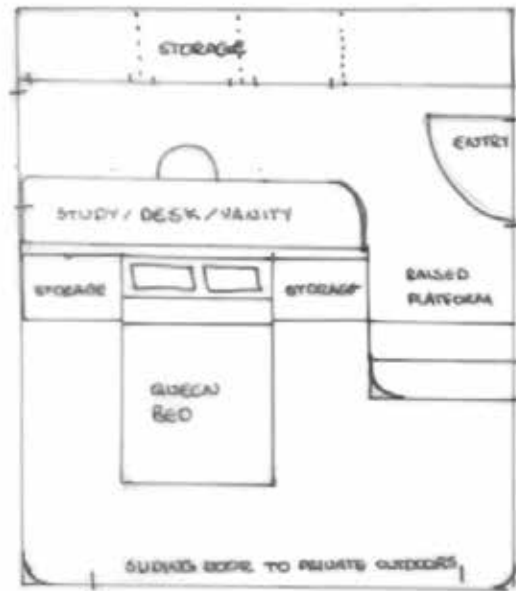




# SKETCHES



# PLATFORM



## TERRITORIAL REINFORCEMENT

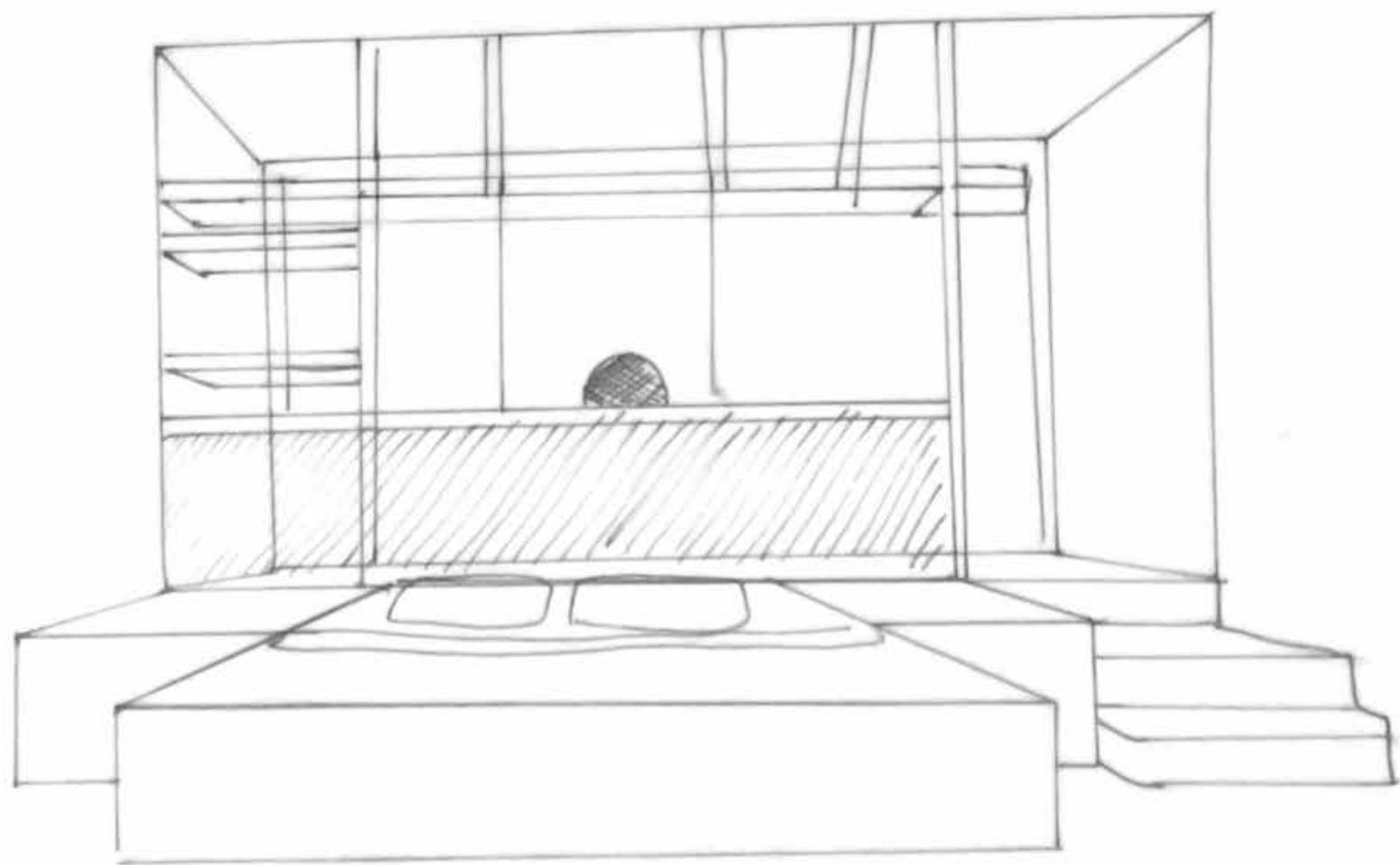
Defining Spatial Boundaries Through Platforms Platforms establish clear territorial divisions within the bedroom, separating the sleeping area as a dedicated retreat. The lowered section enhances relaxation, while the raised workspace remains connected to the rest of the building, reinforcing distinct functional zones.

## CONSIDERATIONS

In this floor plan, the wardrobe was positioned along the upper platform's wall. However, further refinement revealed that this exceeded the 4m x 4m allowance, necessitating a reconsideration of its placement to maintain spatial efficiency without compromising functionality.

## BIOPHILIA

Blending Built Spaces with Natural Forms The platform softens the bedroom's hardscape, mimicking the organic unevenness found in natural landscapes. This design choice enhances comfort and fluidity, creating a more grounded and serene living environment.





# BUILT IN APPROACH

## TERRITORIAL REINFORCEMENT

Built-in display shelving fosters personalization and connection, giving occupants a tangible sense of ownership over their space. This integration strengthens territorial identity, transforming the environment into a reflection of the individual.

## SUSTAINABILITY

Built-in furniture minimizes overproduction, extending its lifespan and encouraging maintenance over replacement. This approach fosters a culture of resource efficiency, reducing waste while supporting long-term sustainability.

## FUNCTIONALITY

Seamlessly integrating furniture into the built environment enhances spatial efficiency and usability, ensuring essential furnishings are accessible—especially crucial for emergency housing and cost-sensitive living solutions.





## **TAPE MAPPING**

A tape mapping technique was used to validate the functionality of the floor plan and ensure compliance with Australian sizing standards. Through this process,



# **PROTOTYPING**



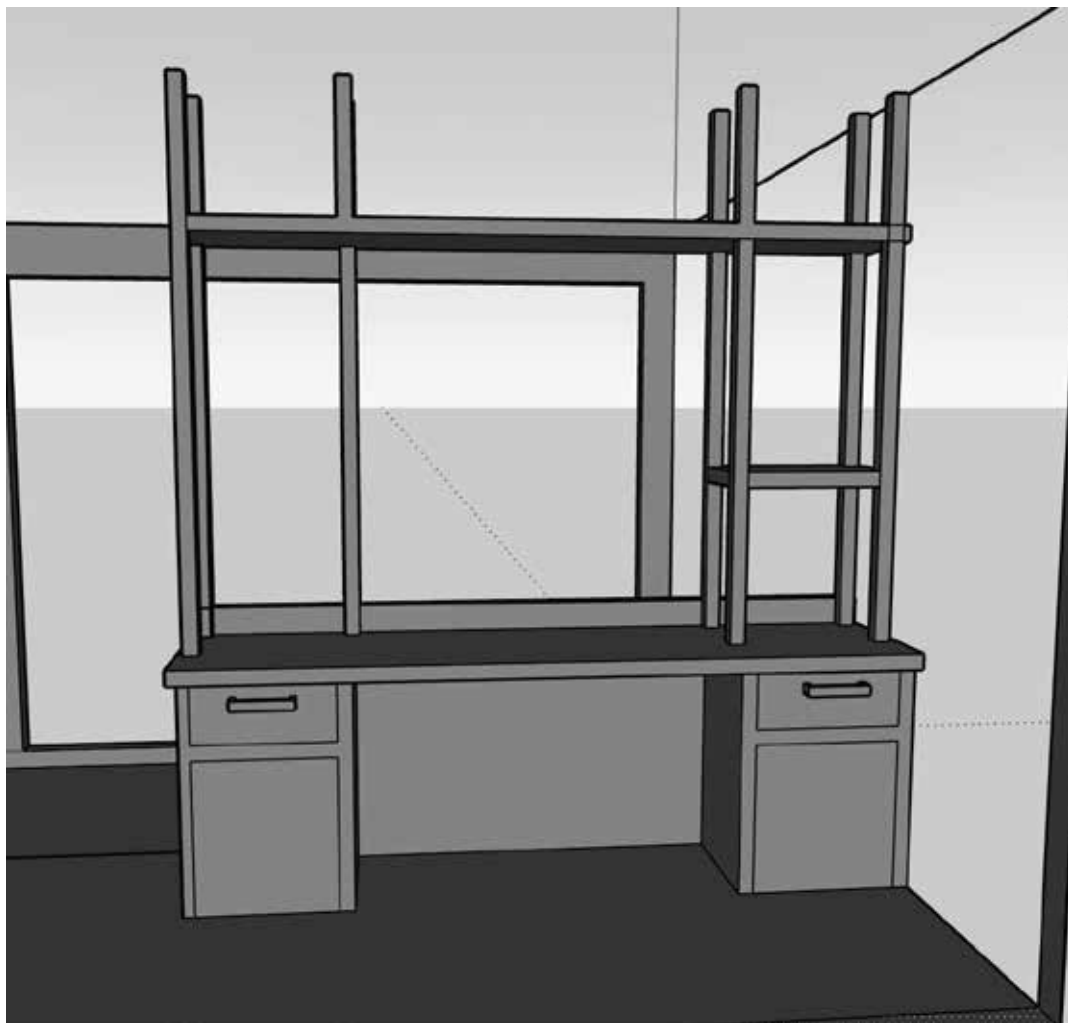
## OFF THE WALL

Refining Bedroom Layout for Efficiency The initial design featured two bedside tables, but space constraints limited the integration of a built-in wardrobe. Keeping the bed off the wall also felt inefficient—a concern echoed by classmates—prompting a reconsideration of spatial allocation to enhance functionality.

## ON THE WALL

By shifting the bed against the wall, enough room was freed up to integrate a built-in wardrobe, improving both functionality and spatial efficiency without compromising comfort.





PROTOTYPE





# CAD

## SKETCHUP

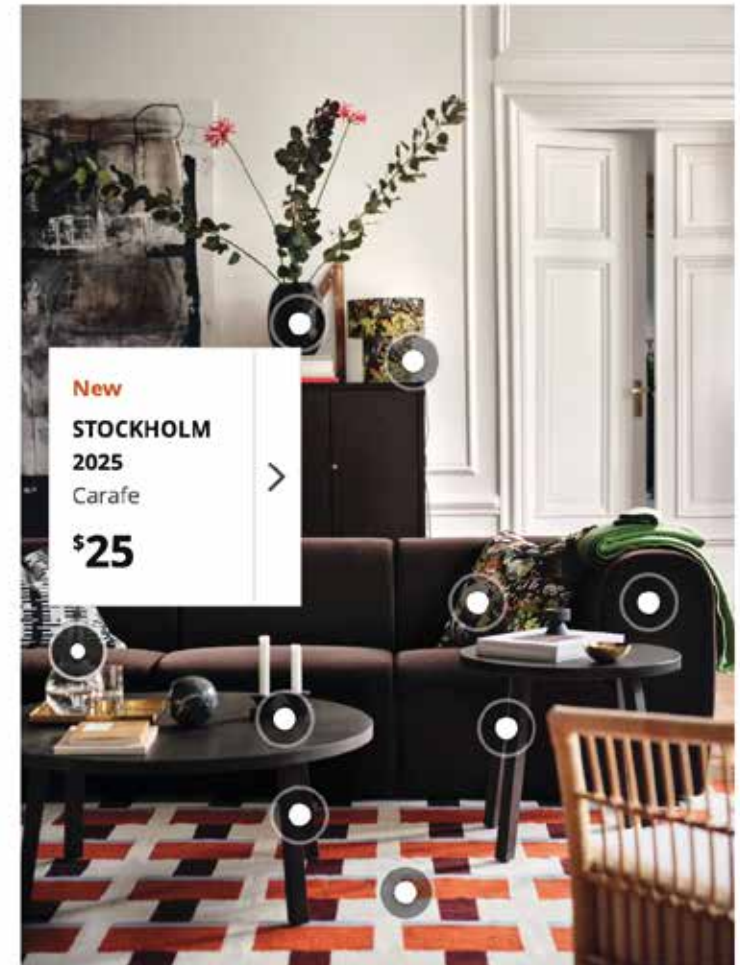
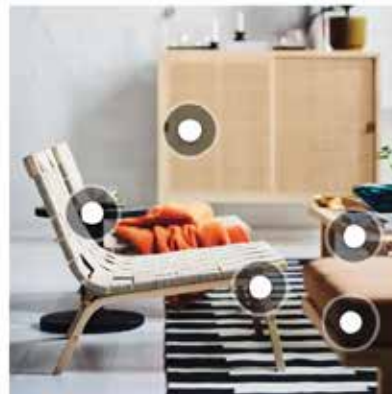
Visualizing the Design in SketchUp: The design was illustrated in SketchUp, providing a clear spatial representation and allowing for refinement of layout, proportions, and functionality within the given constraints.

# CATALOGUE

IKEA CATALOGUE:

## FUTURE

A Catalogue for Social Regeneration The project will be presented as a comprehensive design catalogue, showcasing solutions that promote social regeneration through spatial efficiency, inclusivity, and sustainability. This collection will serve as a guide for fostering connected, equitable living environments.



Through this project, I've gained valuable insights—most notably, the importance of a clear, contained brief. The initial lack of direction made planning difficult, reinforcing how essential structure is in design.

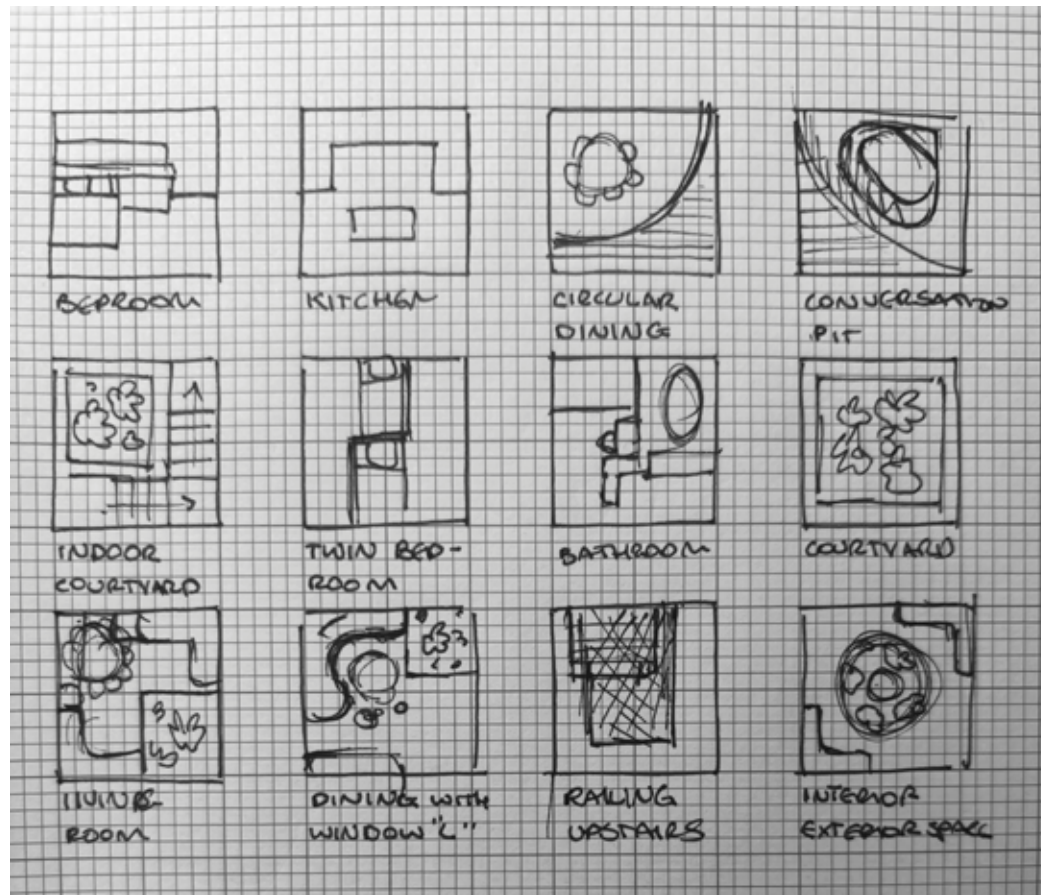
With no prior architecture experience, the learning curve was steep, but pushing myself into unfamiliar territory has been rewarding. While I successfully developed two domestic spaces, a future iteration would focus on modularity to further enhance adaptability.

Next steps include two physical models and a design catalogue, outlining the significance of each asset within the home and reinforcing its role in fostering sustainable, functional living.

# REFLECTION



# MODULARITY



## FUNCTIONALITY

Exploring Modularity in Regenerative Design  
During the conceptualisation phase, I considered modularity as a strategy to support my regenerative design goals. By integrating adaptable elements, the design could evolve with user needs, reducing waste and promoting sustainability. While this concept wasn't fully realized, it remains a compelling direction for future refinement.